

## Macclesfield District General Hospital Emergency Department Monthly Bulletin: January 2010 to December 2010

This bulletin provides a breakdown of all injury attendances at Macclesfield District General Hospital Emergency Department (ED) between January and December 2010.

Between January and December 2010 there were 26,071 ED attendances. Injury attendances peaked in June (n=2,509), with February (n=1,774) having the least number of injury attendances (**Figure 1**).

For all months there were more male injury attendances than female presenting at Macclesfield District General Hospital ED (53%).

**Figure 2** presents the age group of injury attendances. Across the whole year the majority of injury attendances were made by individuals aged 30-59 years.

**Table 1** details the injury group of injury attendances. The majority of injury attendances were classified as 'other injury' (86%). 6% were

recorded as sports injuries and 3% road traffic collisions (RTCs).

**Table 2** illustrates the source of referral for patients presenting with injuries. The majority (76%) of injury attendees self-referred.

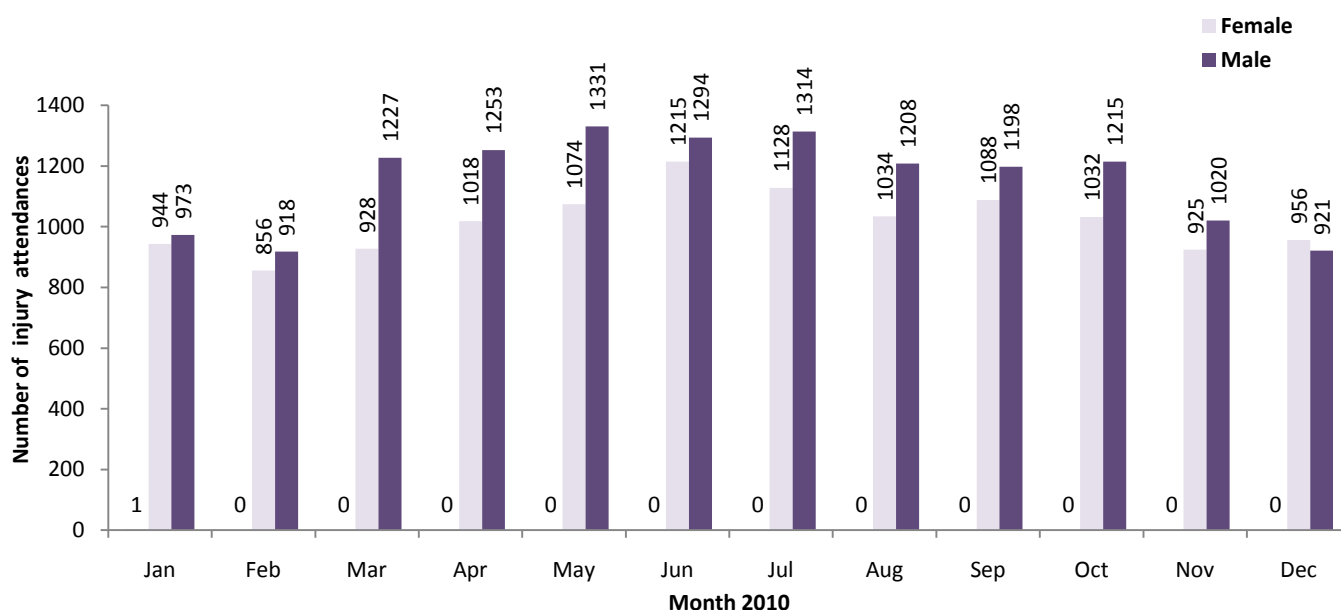
**Table 3** presents injury attendances by location of incident. Nearly half (44%) of all injury locations were recorded as other and 26% recorded as public place.

**Table 4** shows the discharge destination of injury attendances. Over half (52%) of attendees were referred.

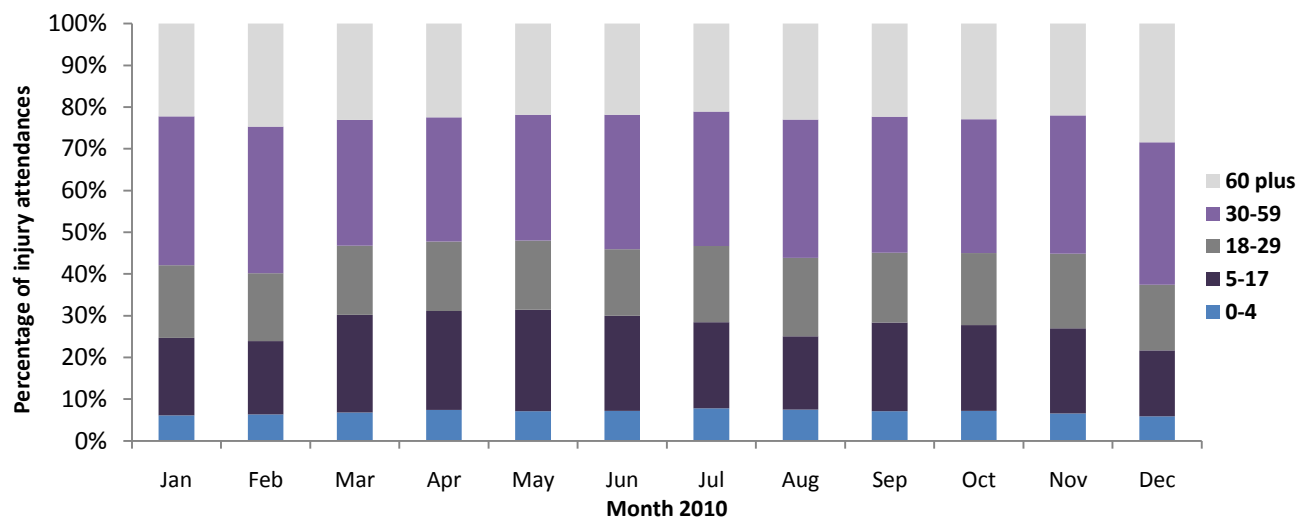
Assault attendees presenting at Macclesfield District General Hospital ED between January and December 2010 were mainly male (65%) and the majority (39%) were aged between 18 and 29 years of age.

**Table 5** shows the primary location of assault was recorded as other (51%).

**Figure 1: Gender of injury attendances by month, January to December 2010**



**Figure 2: Age group of injury attendances by month, January to December 2010**



**Table 1: Injury attendances by injury group, January to December 2010**

Injury group	Jan	Feb	Mar	Apr	May	Jun	Jul	Aug	Sep	Oct	Nov	Dec	Total	%
Other Injury	1680	1506	1841	1938	2070	2224	2123	1939	1928	1882	1617	1681	22429	86
Sports injury	103	91	193	162	171	126	148	126	166	168	143	57	1654	6
RTC	47	79	52	79	71	56	69	84	97	93	82	57	866	3
Assault	38	49	***	47	47	52	***	48	50	49	36	36	525	2
Deliberate self-harm	41	39	37	***	***	***	53	38	39	48	54	38	520	2
Firework injury	9	10	***	***	***	***	***	7	6	7	13	8	77	0
<b>Total</b>	<b>1918</b>	<b>1774</b>	<b>2155</b>	<b>2271</b>	<b>2405</b>	<b>2509</b>	<b>2442</b>	<b>2242</b>	<b>2286</b>	<b>2247</b>	<b>1945</b>	<b>1877</b>	<b>26071</b>	<b>100</b>

**Table 2: Injury attendances by source of referral, January to December 2010<sup>1</sup>**

Source of referral	Jan	Feb	Mar	Apr	May	Jun	Jul	Aug	Sep	Oct	Nov	Dec	Total	%
Self referral	1434	1336	1640	1700	1880	1950	1923	1702	1708	1710	1484	1432	19899	76
Other	251	196	202	274	249	288	282	299	315	287	208	257	3108	12
Health care provider	152	150	179	203	174	150	166	175	181	173	168	116	1987	8
General medical practitioner	64	70	102	70	70	92	49	46	48	47	58	52	768	3
Police	8	15	14	9	14	12	14	13	18	13	11	8	149	1
Work	***	***	***	8	8	6	***	7	5	7	***	***	56	0
Educational establishment	6	7	15	7	10	11	5	***	10	10	12	7	100	0
General dental practitioner	***	***	***	***	***	***	***	***	***	***	***	***	***	0
Local authority social services	***	***	***	***	***	***	***	***	***	***	***	***	***	0
Unknown	***	***	***	***	***	***	***	***	***	***	***	***	***	0
<b>Total</b>	<b>1918</b>	<b>1774</b>	<b>2155</b>	<b>2271</b>	<b>2405</b>	<b>2509</b>	<b>2442</b>	<b>2242</b>	<b>2286</b>	<b>2247</b>	<b>1945</b>	<b>1877</b>	<b>26071</b>	<b>100</b>

**Table 3: Injury attendances by location of incident, January to December 2010**

Incident location	Jan	Feb	Mar	Apr	May	Jun	Jul	Aug	Sep	Oct	Nov	Dec	Total	%
Other	738	765	902	881	1048	1155	1087	1056	990	1016	939	1037	11614	45
Public place	583	453	559	656	640	608	660	585	631	600	434	398	6807	26
Home	371	351	428	513	461	513	459	464	413	379	341	310	5003	19
Work	129	125	123	124	132	137	159	134	136	172	128	77	1576	6
Educational establishment	96	80	143	97	124	96	77	***	116	80	103	55	1070	4
Unknown	***	***	***	***	***	***	***	***	***	***	***	***	***	0
<b>Total</b>	<b>1918</b>	<b>1774</b>	<b>2155</b>	<b>2271</b>	<b>2405</b>	<b>2509</b>	<b>2442</b>	<b>2242</b>	<b>2286</b>	<b>2247</b>	<b>1945</b>	<b>1877</b>	<b>26071</b>	<b>100</b>

<sup>1</sup> \*\*\* Please note that all numbers less than five have been suppressed in line with patient confidentiality and if there is only one number in a category then two numbers will be suppressed at the next level (e.g. <6) in order to prevent back calculations from totals.

**Table 4: Injury attendances by discharge destination, January to December 2010**

Discharge destination	Jan	Feb	Mar	Apr	May	Jun	Jul	Aug	Sep	Oct	Nov	Dec	Total	%
Referred	933	801	1021	1152	1225	1287	1350	1194	1257	1208	990	1013	13431	52
Other	707	728	855	714	785	813	662	618	621	621	551	542	8217	32
Admitted	277	243	278	398	388	403	424	426	404	412	401	318	4372	17
Unknown	***	***	***	7	7	6	6	***	***	6	***	***	46	0
Discharged	***	***	***	***	***	***	***	***	***	***	***	***	5	0
<b>Total</b>	<b>1918</b>	<b>1774</b>	<b>2155</b>	<b>2271</b>	<b>2405</b>	<b>2509</b>	<b>2442</b>	<b>2242</b>	<b>2286</b>	<b>2247</b>	<b>1945</b>	<b>1877</b>	<b>26071</b>	<b>100</b>

**Table 5: Location of assault for assault attendances, January to December 2010**

Assault location	Jan	Feb	Mar	Apr	May	Jun	Jul	Aug	Sep	Oct	Nov	Dec	Total	%
Other	19	20	17	18	21	29	21	27	23	28	20	24	267	51
Public place	18	19	7	22	17	20	16	15	22	14	10	7	187	36
Work	***	6	***	5	***	***	***	***	***	5	***	***	34	6
Educational establishment	***	***	***	***	***	***	***	***	***	***	***	***	19	4
Home	***	***	***	***	***	***	***	***	***	***	***	***	18	3
Unknown	***	***	***	***	***	***	***	***	***	***	***	***	***	0
<b>Total</b>	<b>38</b>	<b>49</b>	<b>28</b>	<b>47</b>	<b>47</b>	<b>52</b>	<b>45</b>	<b>48</b>	<b>50</b>	<b>49</b>	<b>36</b>	<b>36</b>	<b>525</b>	<b>100</b>

Published January 2011

Jennifer Brizell (Merseyside and Cheshire TIIG officer)

Centre for Public Health, Faculty of Health and Applied Social Sciences, Liverpool John Moores University

3rd Floor, Henry Cotton Campus, 15-21 Webster Street, Liverpool, L3 2ET

Tel: 0151 231 4500 Email: [j.s.brizell@ljmu.ac.uk](mailto:j.s.brizell@ljmu.ac.uk)

Website: [www.tiig.info](http://www.tiig.info) (please note all data requests should be made through the TIIG website)